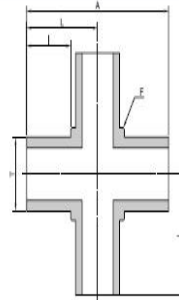


# Auto Welding Types • WCC/WCTB/WCVE/WCRU



*Micro Cross*

**WCC**



Part No.	T		Wall Thickness	A	l	F Flat		L	Pressure Rating (psi)
	in	mm				in	mm		
WCC-02	1/8	3.17	0.71	20.8	6.4	5/16	7.94	10.4	8500
WCC-04	1/4	6.35	0.89	20.8	6.4	5/16	7.94	10.4	5100
WCC-06	3/8	9.52	0.89	23.9	6.4	7/16	11.11	11.9	3300
WCC-08	1/2	12.70	1.24	26.9	6.4	9/16	14.28	13.5	3700